

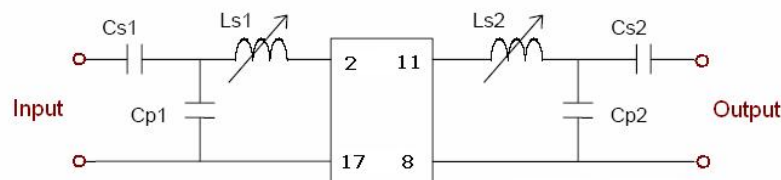
### Specifications

Parameter	Unit	Minimum	Typical	Maximum
Center Frequency	MHz	69.98	69.99	70.00
Insertion Loss	dB		20	21
1.5dB Bandwidth	MHz	1.26	1.28	
35 dB Bandwidth	MHz		1.48	1.50
50dB Bandwidth	MHz		1.67	
Passband Variation(in $F_c \pm 0.615\text{MHz}$ )	dB		0.7	1
Group Delay Variation(in $F_c \pm 0.615\text{MHz}$ )	nsec		900	
Phase Linearity (in $F_c \pm 0.615\text{ MHz}$ )	deg		9	
Absolute Delay	usec		11.12	
Ultimate Rejection(outside $F_c \pm 0.9\text{ MHz}$ )	dB	50	55	
Triple transit suppression	dB	30.0	40.0	
Input/Output SWR (1) at $F_c$			1.3	1.8
Source Impedance	ohm	-	50	-
Load Impedance	ohm	-	50	-
Substrate Material			Quartz	
Ambient Temperature	°C		25	
Package Size		HQ04 (73.28x19.94x6.5)		

#### Notes:

- (1) with matching network
- (2) All specifications are based on the test circuit shown below
- (3) Electrical margin has been built into the design to account for the variations due to manufacturing tolerances
- (4) This specification is valid for room temperature only

### Matching Configuration



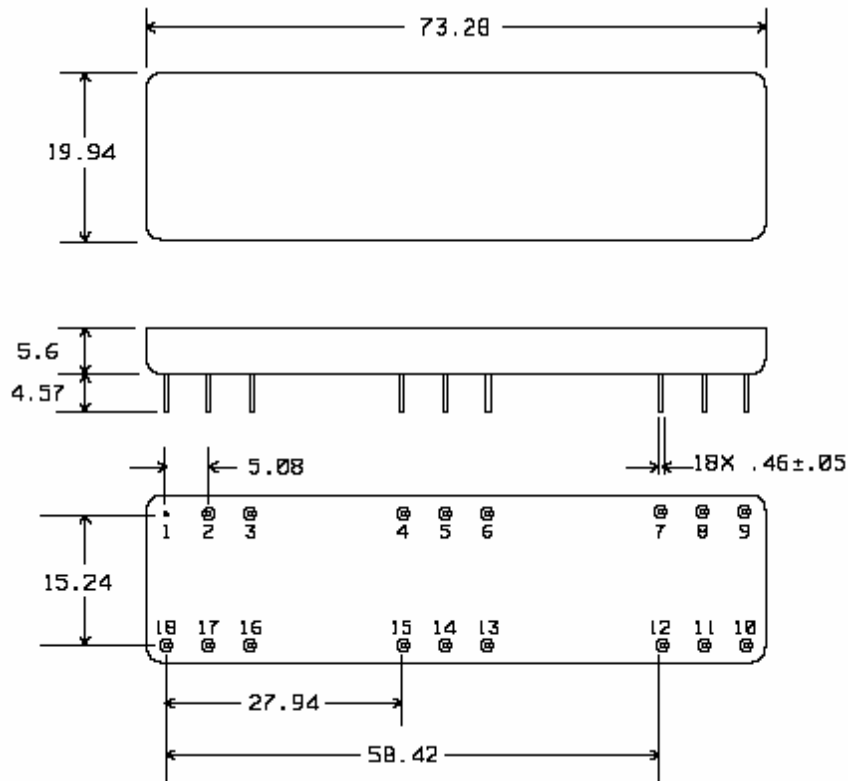
Typical component values:  $Ls1 = 150\text{ nH}$   $Cp1 = 39\text{ pF}$   $Cs1 = 15\text{ pF}$   
(minimum inductor  $Q = 50$ )  $Ls2 = 150\text{ nH}$   $Cp2 = 56\text{ pF}$   $Cs2 = 22\text{ pF}$



**SIPAT Co., Ltd.**  
( CETC No. 26 Research Institute )  
Nanping Huayuan Road No. 14  
Chongqing, China, 400060

Part Number	LBS07073	
Rev. Date	2005-4-18	
Rev.	1.0	Page 1/4

*Package Dimension*



Pin Configuration:

Units: mm

Input: 2

Output: 11

Ground: other

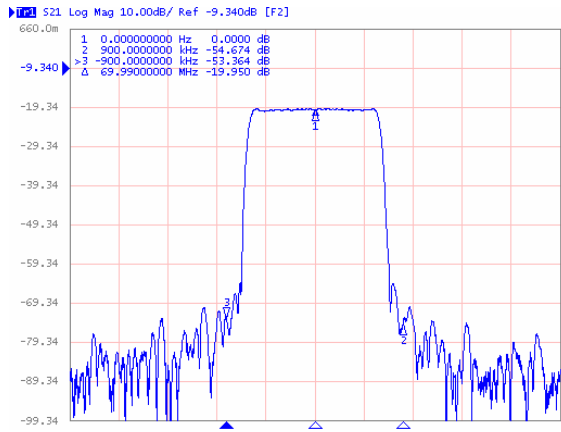


**SIPAT Co., Ltd.**  
( CETC No. 26 Research Institute )  
Nanping Huayuan Road No. 14  
Chongqing, China, 400060

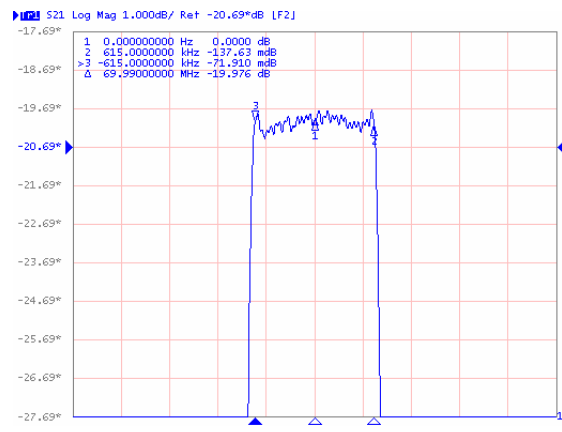
Part Number	LBS07073	
Rev. Date	2005-4-18	
Rev.	1.0	Page 2/4

Typical Performance

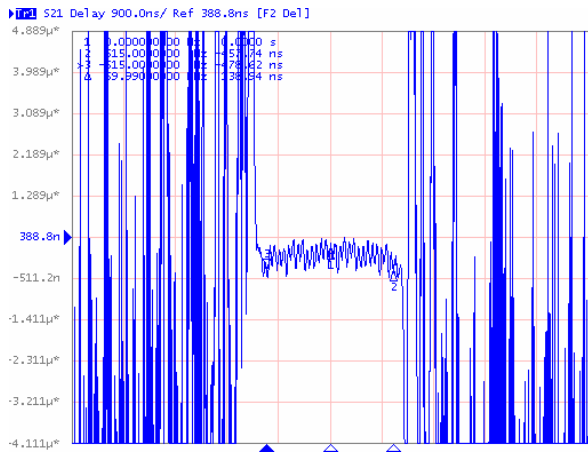
Frequency Respond



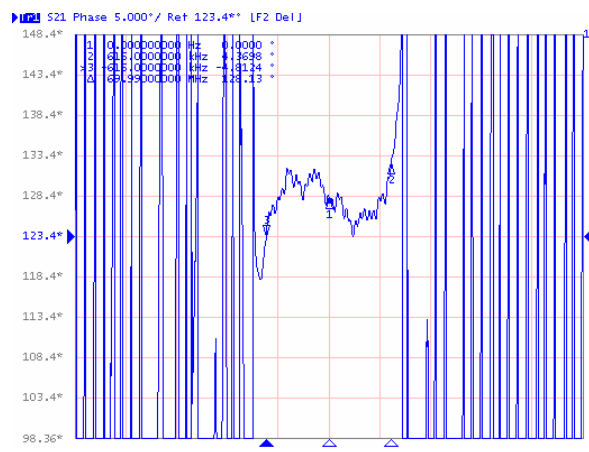
Passband Respond



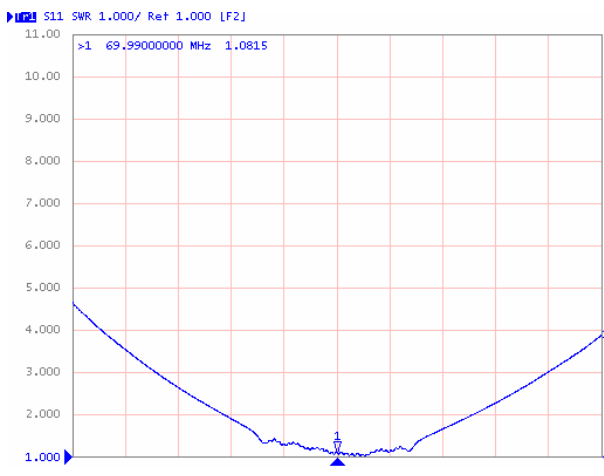
Group Delay Variation( $f_0 \pm 0.615\text{MHz}$ )



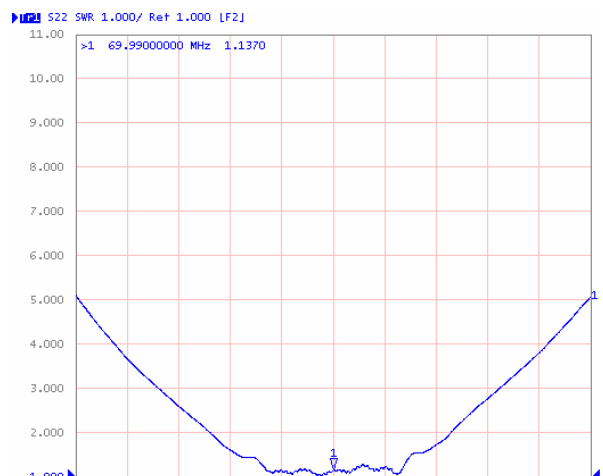
Phase Linearity( $f_0 \pm 0.615\text{MHz}$ )



VSWR S11



VSWR S22



**SIPAT Co., Ltd.**  
( CETC No. 26 Research Institute )  
Nanping Huayuan Road No. 14  
Chongqing, China, 400060

Part Number

LBS07073

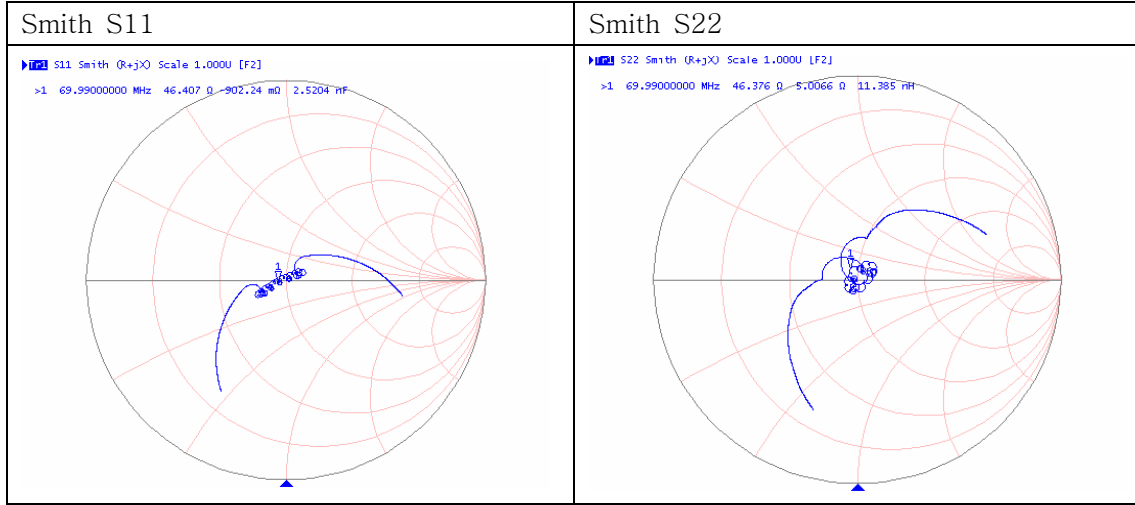
Rev. Date


2005-4-18

Rev.

1.0

Page 3/4



	<p><b>SIPAT Co., Ltd.</b> ( CETC No. 26 Research Institute ) Nanping Huayuan Road No. 14 Chongqing, China, 400060</p>	Part Number		LBS07073	
		Rev. Date		2005-4-18	
		Rev.	1.0	Page	4/4